



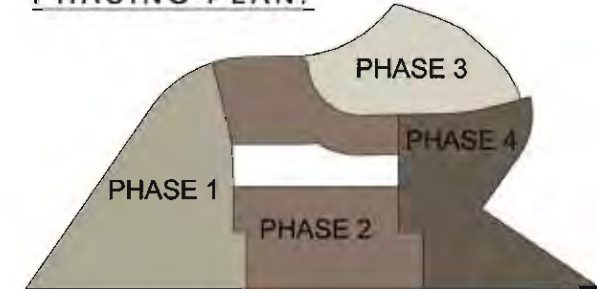
PROJECT DATA:

SITE AREA:
 GROSS: 510.5 AC (22,237,380 SF)
 NET: 389.5 AC (16,966,620 SF)
 (LESS DETENTION, SPECIAL PURPOSE PLAN BASIN LOCATION, ARNAIZ PROPERTY AND AG CENTER PROPERTY)

BUILDING AREA: 5,263,270 SF
 MANF./WAREHOUSE: 1,183,250 SF
 AIRPORT RELATED: 1,322,620 SF
 INDUST./OFFICE/FLEX: 1,009,100 SF
 OFFICE/CORP. HQ: 1,541,800 SF
 RETAIL/REST.: 138,500 SF
 HOTEL: 68,000 SF

F.A.R.: .31 (NET)

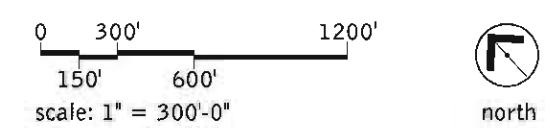
PHASING PLAN:



VICINITY MAP:



NOTE:
 THIS CONCEPTUAL DESIGN PLAN IS BASED UPON A PRELIMINARY REVIEW OF ENTITLEMENT REQUIREMENTS AND ON UNVERIFIED AND POSSIBLY INCOMPLETE SITE INFORMATION, AND IS INTENDED MERELY TO ASSIST IN EXPLORING HOW THE SITE MIGHT BE DEVELOPED.



Airpark 599
 Stockton, California

Conceptual Master Plan
 Scheme: 7

SNR08-0059-00
 01-27-2009

WARE MALCOMB
 Leading Design for Commercial Real Estate
 Integrated service across north america | waremalcomb.com